

# Upgrading OmniSwitch 6800/6850 L Series Switches to 10/100/1000

---

## Overview

This instruction sheet documents how to upgrade OmniSwitch 6800/6850 L Series switches to 10/100/1000 capability. There are two methods to upgrade your switch to 10/100/1000 capability. You can either upgrade a single switch, which is described in [Upgrading a Single Switch on page 2](#), or upgrade multiple standalone or stacked switches, which is described in [Upgrading Multiple Switches \(Standalone or Stacked\) on page 6](#).

# Upgrading a Single Switch

To obtain a single license key to upgrade a single switch, you will need the Activation Code listed on your Software License Upgrade Certificate, the switch's serial number, and the switch's MAC address. Follow the steps below to create a single license key.

- 1 Obtain the Card ID (Activation Code) from the Software License Upgrade Certificate and the serial number and the MAC address of the switch using the CLI command **show chassis** shown below:

```
-> show chassis
Chassis 1
  Model Name:          OS6850-P24XL,
  Description:        24 10/100 POE + 2 10 G,
  Part Number:        902431-10,
  Hardware Revision:  06,
  Serial Number:      H03Q0007,
  Manufacture Date:   SEP 07 2006,
  Admin Status:       POWER ON,
  Operational Status: UP,
  Number Of Resets:   317
MAC Address:          00:e0:b1:6a:43:d4,
```

- 2 Go to the licensing web site below and choose 'OmniSwitch 6850L/6800L'.

- <https://service.esd.alcatel-lucent.com/license>

**OmniSwitch 6850L/6800L License / Registration**

OmniSwitch 6850L/6800L

**Method 1. Type in and create one License Key**

Card ID (Activation Code)	Serial Number	MAC Address (00:d0:95:d3:8e:fc)
266858098	H03Q0007	00:e0:b1:6a:43:d4

Submit Single Entry

**Method 2. Upload CSV formatted file and create multiple License Keys**

CSV Formatted File

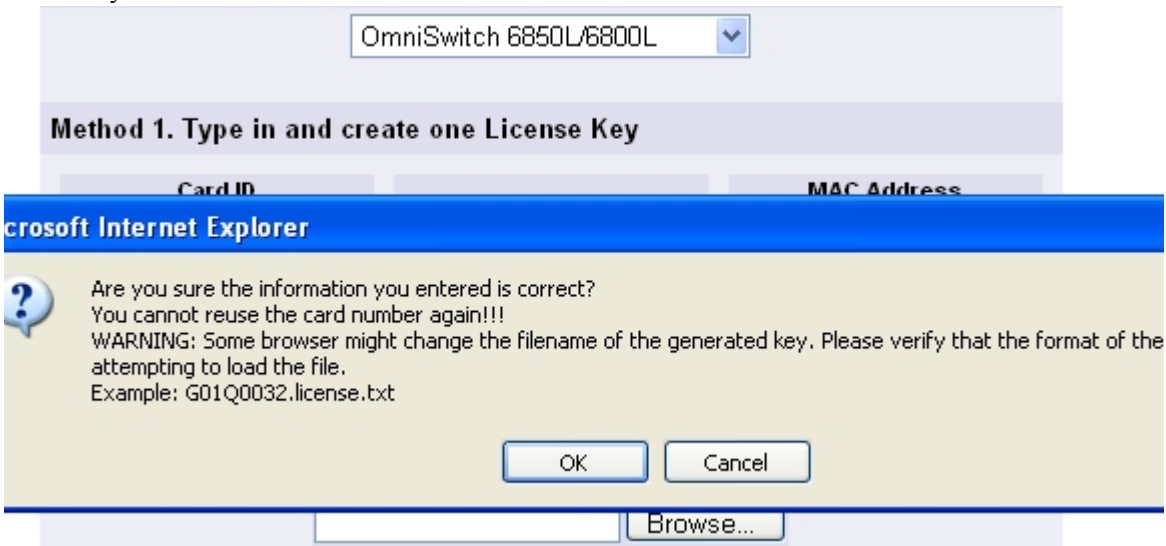
Browse...

Upload CSV File

### Method 1: License Screen Example

- 3 Enter the card ID, serial number, and the MAC address of the switch.

- 4 After entering all of the information, click **Submit Single Entry**. The system will prompt you to verify whether or not all of the information is correct.



#### Method 1: Confirmation Screen

- 5 Verify the information and click **OK**. The system will display a dialog box asking you to save the file.

---

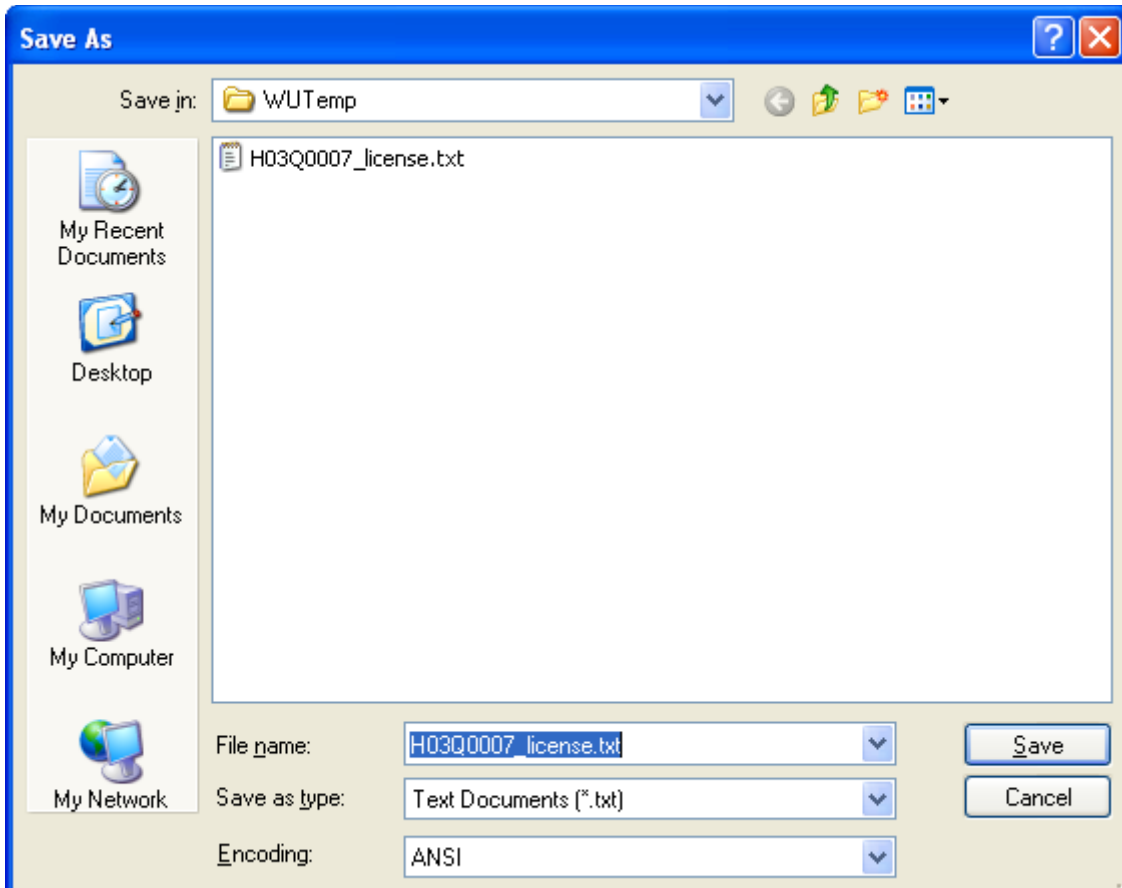
**Note:** If upgrading a switch running an AOS release prior to 6.3.1 the file format must be: **F1234567.license.txt**.

---

---

**Note:** If upgrading a switch running AOS release 6.3.1 or above either of the following formats will work: **F1234567.license.txt** or **F1234567\_license.txt**.

---



### Method 1: Download Screen

- 6 Ensure the file is saved in the proper format as noted above.
  - OmniSwitch running AOS code prior to 6.3.1 - **F1234567.license.txt**.
  - OmniSwitch running AOS code 6.3.1 or later - **F1234567.license.txt** or **F1234567\_license.txt**.
  - An alternative is to use **license.txt**, but the previous methods will help associate a license key with a specific switch.
- 7 Once the file is saved, you must transfer the file in ASCII format to the /flash directory of the switch.
- 8 Reload the switch. The switch will reload with ports configured for the 10/100/1000 capability.

- 9 Execute the **show chassis** command to verify that the Description column displays '24 G'. Another way to verify is to execute the **show interfaces capability** command and confirm that the Speed column displays 1G.

```
-> show chassis
Chassis 1
  Model Name: OS6850-P24XL,
  Description:                24 G POE + 2 10 G,
  Part Number:                902431-10,
  Hardware Revision:         06,
  Serial Number:             H03Q0007,
  Manufacture Date:          SEP 07 2006,
  Admin Status:              POWER ON,
  Operational Status:        UP,
  Number Of Resets:          317
  MAC Addrss: 00:e0:b1:6a:43:d4,
```

# Upgrading Multiple Switches (Standalone or Stacked)

---

**Note:** When upgrading multiple switches, the steps under the ‘Upgrading A Single Switch’ section can be performed repeatedly, or the steps below can be used to generate multiple licenses in a single step.

---

Follow these steps to create multiple license keys.

- 1 Obtain the serial numbers and the MAC addresses of the switches using the CLI command **show chassis** shown below:

**Note:** If the switches are in a stacked configuration, the base MAC address of each unit will be displayed as shown below.

---

```
-> show chassis
```

```
Chassis 1
```

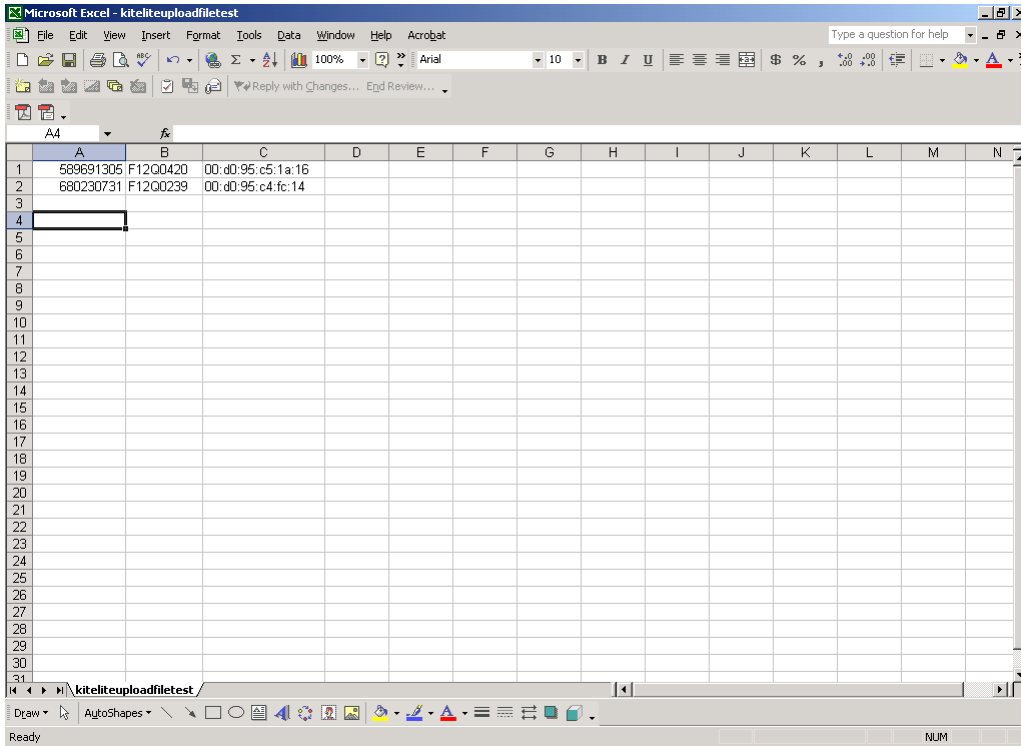
```
Model Name:          OS6850-24L,  
Description:         24 10/100,  
Part Number:        902414-10,  
Hardware Revision:  03,  
Serial Number:      G0250624,  
Manufacture Date:   JAN 21 2006,  
Admin Status:       POWER ON,  
Operational Status: UP,  
Number Of Resets:   50  
MAC Address:        00:d0:95:e0:2f:d0,
```

```
Chassis 2
```

```
Model Name:          OS6850-P24XL,  
Description:         24 10/100 POE + 2 10 G,  
Part Number:        902431-10,  
Hardware Revision:  06,  
Serial Number:      H03Q0007,  
Manufacture Date:   SEP 07 2006,  
Admin Status:       POWER ON,  
Operational Status: UP,  
Number Of Resets:   50  
MAC Address:        00:e0:b1:6a:43:d4,
```

- 2 Create a file with the card IDs, serial numbers, and the MAC addresses of the switches you want to upgrade to 10/100/1000 capability in the CSV format. (This can done with many applications, including Microsoft Excel.) [Step a](#) through [Step g](#) shows a typical example using Microsoft Excel.
  - a. Open Microsoft Excel.
  - b. On the first row enter the card ID, serial number, and the MAC address of the switch as shown below.

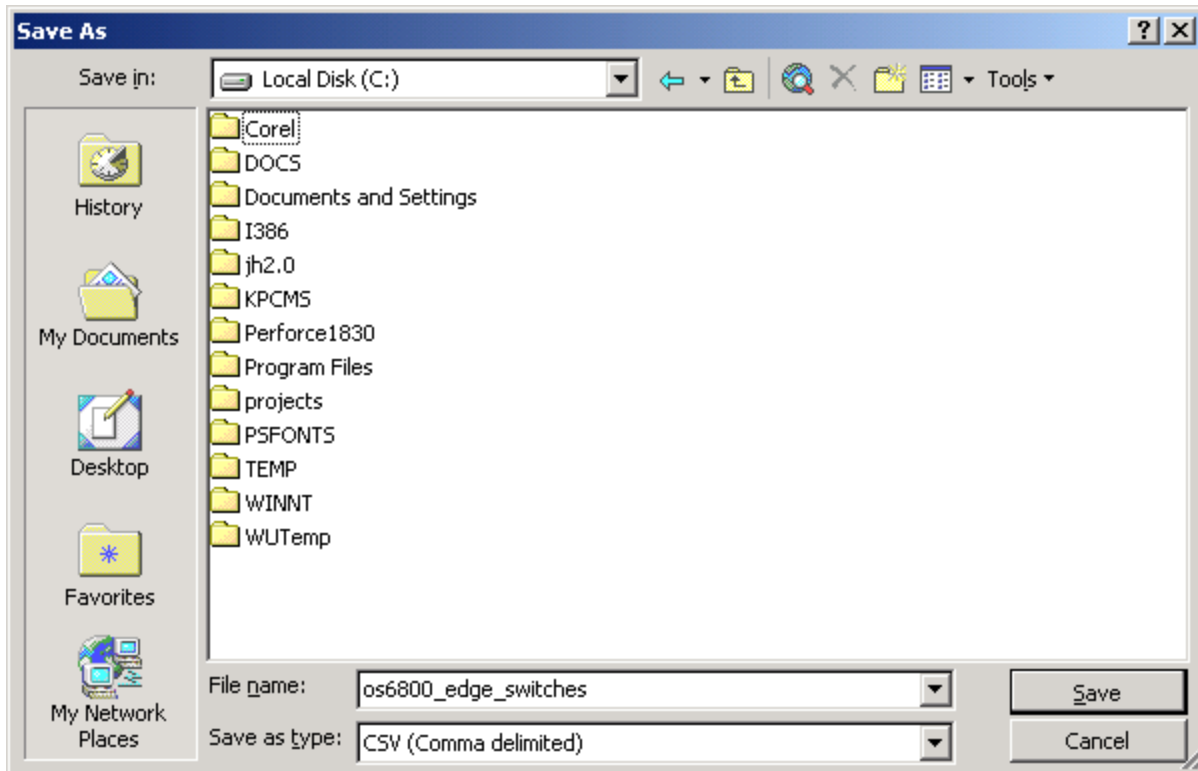
Make sure the parameters are in order, and that each parameter is in a separate column.



### Method 2: Sample CSV File

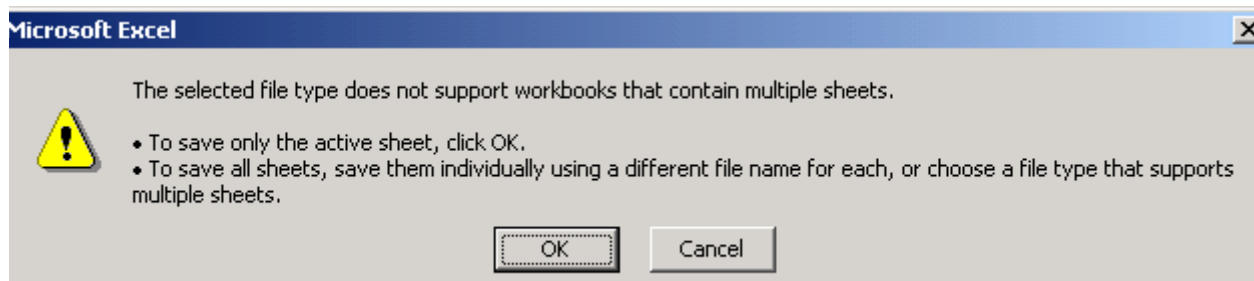
- c. Repeat Step b for each additional switch.

- d. Save the file in CSV format by selecting **Save As > CSV (Comma delimited)** as shown below:



### Method 2: Saving a CSV Format File in Excel

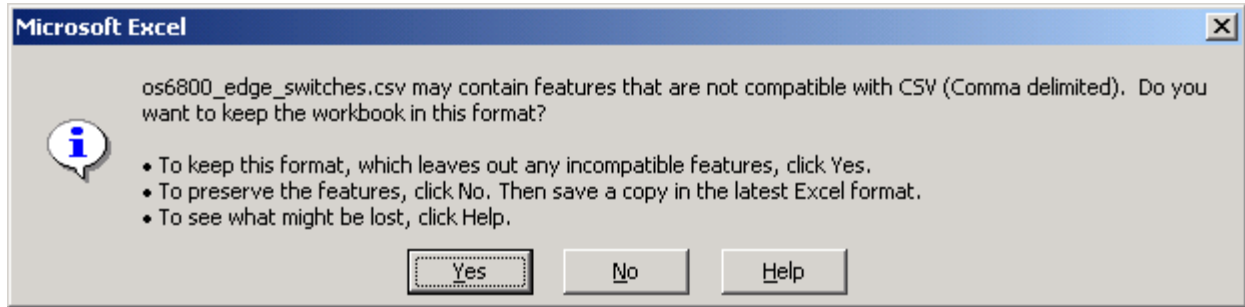
- e. Click **Save**. The following window will be displayed:



### Method 2: Click “OK” to Save the CSV File

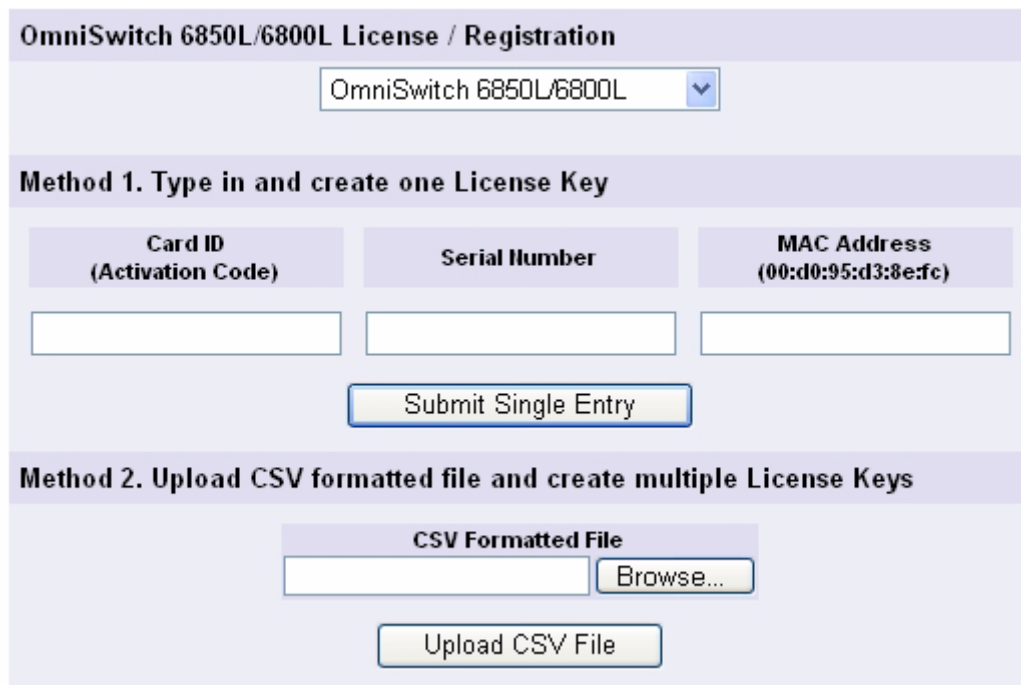


- f. Click **OK**. The following window will be displayed:



**Method 2: Click “Yes” to Save the CSV File**

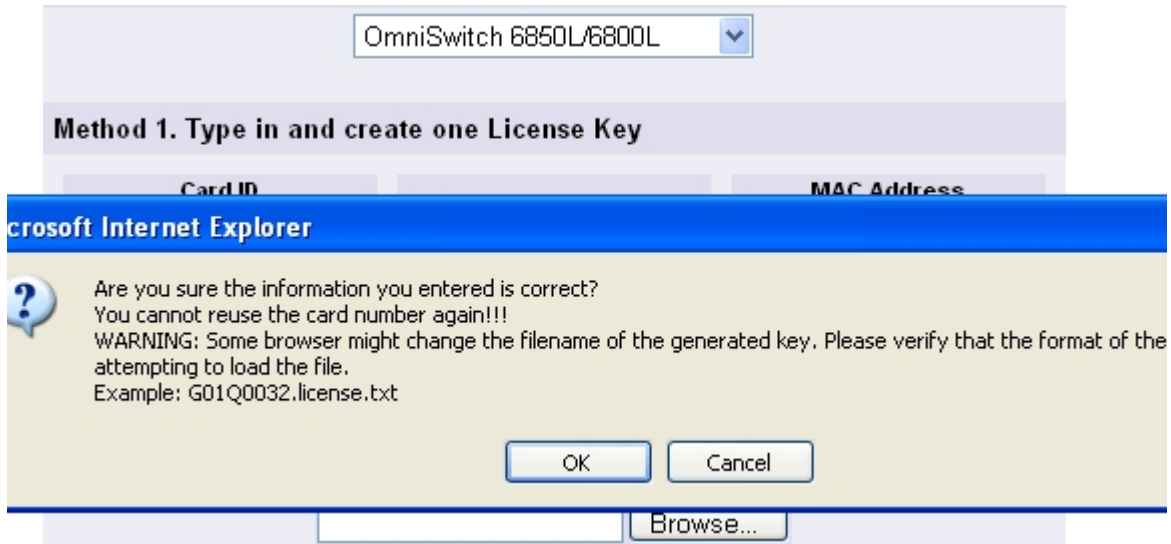
- g. Click **Yes**. The required information is now saved in CSV format.
- 3 Go to the licensing web site below and choose ‘**OmniSwitch 6850L/6800L**’.
- <https://service.esd.alcatel-lucent.com/license>



**Method 2: License Screen**

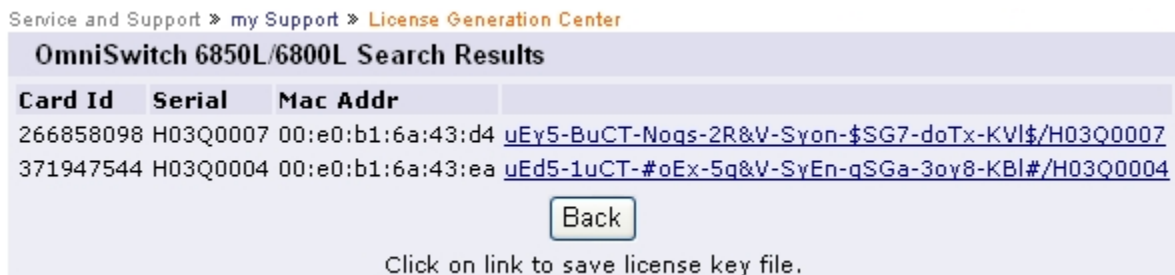
- 4 Click **Browse** to locate the specific CSV format file on your hard drive.

- 5 After selecting the CSV format file, click **Upload CSV File**. The system will prompt you to verify whether all the information is correct or not.



### Method 2: Confirmation Screen

- 6 After you click **OK**, the system will generate one or more license keys based on the number of rows in your CSV file. You can then click the link and save each license file that was generated.



### Method 2: Download Screen

---

**Note:** If upgrading a switch running an AOS release prior to 6.3.1 the file format must be: **F1234567.license.txt**.

---



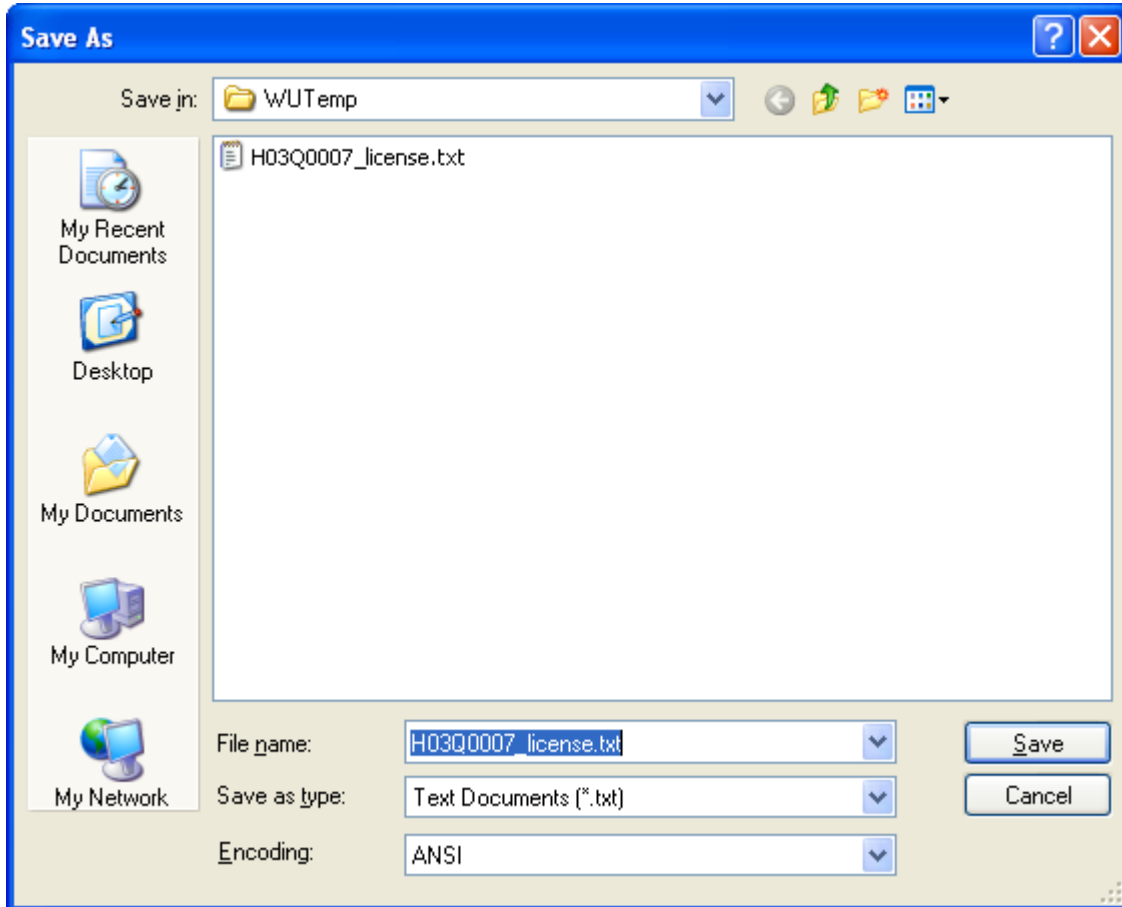
---

**Note:** If upgrading a switch running AOS release 6.3.1 or above either of the following formats will work: **F1234567.license.txt** or **F1234567\_license.txt**.

---

- 7 Ensure the file is saved in the proper format as noted above.

- OmniSwitch running AOS code prior to 6.3.1 - **F1234567.license.txt**.
- OmniSwitch running AOS code 6.3.1 or later - **F1234567.license.txt** or **F1234567\_license.txt**.
- An alternative is to use **license.txt**, but the previous methods will help associate a license key with a specific switch.



**Method 2: Save Screen**

## Upgrading Multiple Standalone Switches

- 8 Once the files are saved, you must transfer the files in ascii format to the /flash directory of each switch.
- 9 Reload the switch. The switch will reload with ports configured for the 10/100/1000 capability.
- 10 Execute the **show chassis** command again to verify that the Description column displays '24 G'. Another way to verify is to execute the **show interfaces capability** command and confirm that the Speed column displays 1G.
- 11 Perform the steps above for each standalone switch to be upgraded.

```
-> show chassis
Chassis 1
  Model Name:                OS6850-P24XL,
  Description:               24 G POE + 2 10 G,
  Part Number:               902431-10,
  Hardware Revision:         06,
  Serial Number:             H03Q0007,
  Manufacture Date:          SEP 07 2006,
  Admin Status:              POWER ON,
  Operational Status:        UP,
  Number Of Resets:          317
MAC Address:                 00:e0:b1:61:43:d4,
```

## Upgrading A Stack of Switches

- 12 Once the files are saved, you must transfer the files in ascii format to the /flash directory of each switch in the stack, the process varies based on whether the switch being upgraded is the Primary or a non-Primary switch in the stack.

### Upgrading the Primary

- 13 Transfer the file in ascii format to the /flash directory of the Primary switch.
- 14 Reload the switch. The switch will reload with ports configured for the 10/100/1000 capability.

### Upgrading a non-Primary Switch in a Stack

- 15 Transfer the files in ascii format to the /flash directory of the Primary switch.
- 16 Use the **rcp** command to remote copy the proper license to the destination switch.

```
-> rcp /flash/H03Q0007_license.txt 2:/flash/H03Q0007_license.txt
```

- 17 Reload the non-Primary switch. The switch will reload with ports configured for the 10/100/1000 capability.

```
-> reload 2
```

- 18 Execute the **show chassis** command again to verify that the Description column displays '24 G'.

Another way to verify is to execute the **show interfaces capability** command and confirm that the Speed column displays 1G.

```
-> show chassis
Chassis 1
  Model Name:          OS6850-P24XL,
  Description:        24 G POE + 2 10 G,
  Part Number:        902431-10,
  Hardware Revision:  06,
  Serial Number:      H03Q0007,
  Manufacture Date:   SEP 07 2006,
  Admin Status:       POWER ON,
  Operational Status: UP,
  Number Of Resets:   317
MAC Address:          00:30:b1:61:43:d4
```

**19** Perform the steps above for each non-primary switch to be upgraded.



26801 West Agoura Road  
Calabasas, CA 91301

US Customer Support: (800) 995-2696  
International Customer Support: (818) 878-4507  
Internet: [service.esd.alcatel-lucent.com](http://service.esd.alcatel-lucent.com)

